

Diagnostics of the future

Technological innovation and quality Made in Italy

Imaginalis was born as an *innovative start-up* in 2013 in Calenzano (FI) with the aim of developing *cutting-edge* technologies in human and veterinary *interventional radiology*.

The company becomes part of the American group *Epica International* while maintaining its absolutely Italian identity. Imaginalis, in fact, produces, researches and develops its products in *Sesto Fiorentino*.





Compact, Transportable and Lightweight

Our machines *drastically reduce* installation and operating costs, additionally, they can also be *easily moved* around the clinic.

WHAT WE DO

We develop innovative scanners for medical and veterinary radiology, conceived as hybrid platforms that integrate CT, fluoroscopy and direct digital radiology. Our machines are designed and manufactured entirely in Sesto Fiorentino.

OUR VISION

Imaginalis pursues diagnostics that respect people and the environment, where the patient is at the centre of the medical services.

PEGASO EVOLUTION

High-performance diagnostic tool with a *minimally invasive* procedure, ideal for scanning the head, neck and limbs of the horse at the station. Pegaso protects the well-being of both equidae and health personnel.

Thanks to *Cone Beam* technology, it integrates *Computerised Tomography* and *Fluoroscopy* in a single machine.



DESIGNED FOR
EQUIDAE



LIGHTWEIGHT &
TRANSPORTABLE



HIGH
RESOLUTION



LOW
RADIATIONS



LOW
CONSUMPTION



LIFTABLE
WITH LIFTER





Internal cameras

Allow the micro correction of movement, ensuring precise images.



Mobile Console

With dual screen and user friendly interface.



Gantry

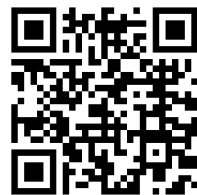
Inner diameter of 123 cm. Tilts up to 10° to facilitate use.

Wheels and Platform

Facilitate handling and installation.



Height	209 cm
Length	232 cm
Width	217 cm
Gantry Diameter	222 cm



Watch the video of the machine

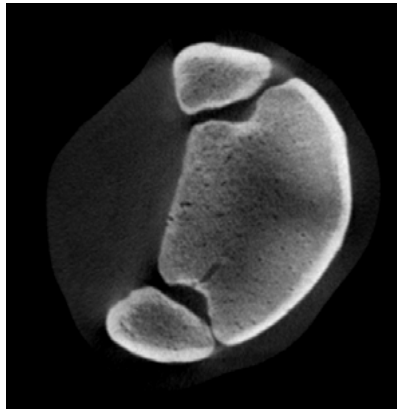
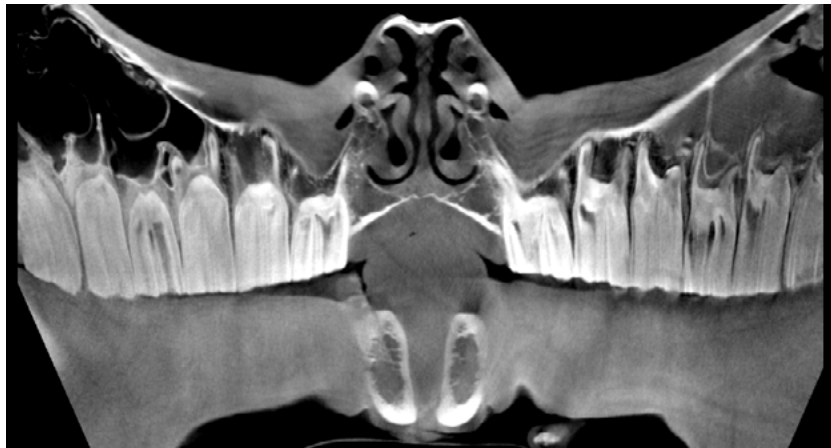


Reduced Radiation

Thanks to Cone Beam technology, radiation is reduced, ensuring the *well-being* of the patient and the technical operators.

Standing Scan

The *head, neck* and *limbs* of the equine can be scanned with the *sedated* patient *standing*, limiting the risks related to anaesthesia.



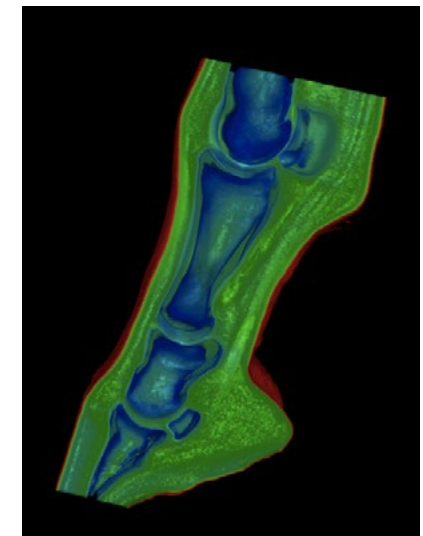
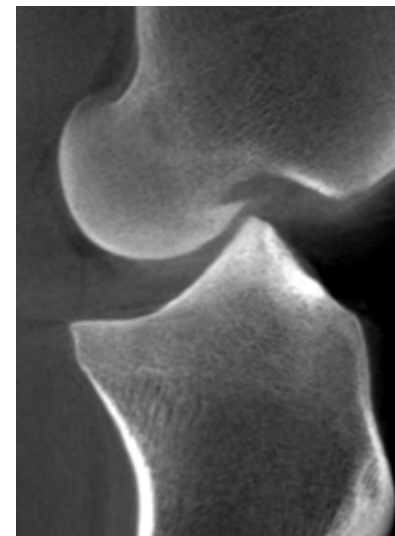
Interface and Image Reprocessing

SCOUTING

Our machines have been designed for veterinarians. The software interface is easy to use, has a *scouting* system to facilitate patient positioning and a viewer that allows the *reprocessing* of the images. Designed exclusively for the animal patient.

POST PROCESSING

It allows you to review and analyse the results of the examination in depth at a later time, after releasing the patient.



VIMAGO FAMILY

The machines of the Vimago Family achieve the highest level of evolution of *Flat Panel CT* technology, providing quality diagnostic imaging for both *hard and soft tissues*.

Our HDVI technology excludes interpolation and returns *perfect scans* in both 2D and 3D.



3 DEVICES
IN 1



LIGHTWEIGHT &
TRANSPORTABLE



HIGH
Resolution



CONE BEAM
TECHNOLOGY



LOW
COSTS



LOW
ENVIRONMENTAL
IMPACT



VIMAGO GT-30

Touch Screen

Allows you to position the patient quickly and easily.

Table

Facilitates anaesthesia and sedation.

Small and Compact

Easily transportable within the clinic.



Reduced Radiation

Thanks to Cone Beam technology, radiation is reduced, ensuring the well-being of the patient and the technical operators.

Mobile Console

Equipped with dual monitors and user-friendly interface.



Learn more
about
Vimago



Height	180 cm
Length	156 cm
Gantry Diameter	152 cm
Weight	350 kg

VIMAGO GT-30 PICO

Independent Table

Ideal in the operating room, it allows you to move the patient, facilitating the intra-surgical procedure.

Small and Compact

Easily transportable inside the clinic and operating room.

Wheels

They facilitate handling and installation.

Coupling system

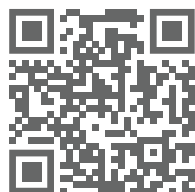
It allows the anchoring of the independent table to the Gantry of the machine in order to facilitate the positioning before scanning.

Reduced Radiation

Thanks to Cone Beam technology, radiation is reduced, ensuring the *well-being* of the patient and the technical operators.

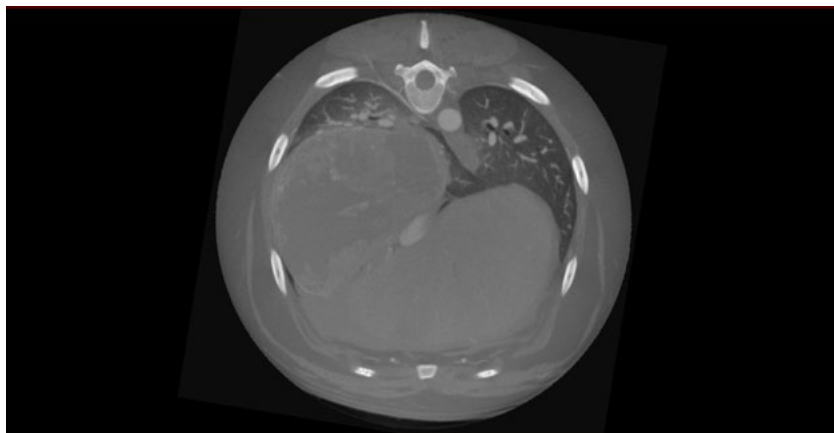
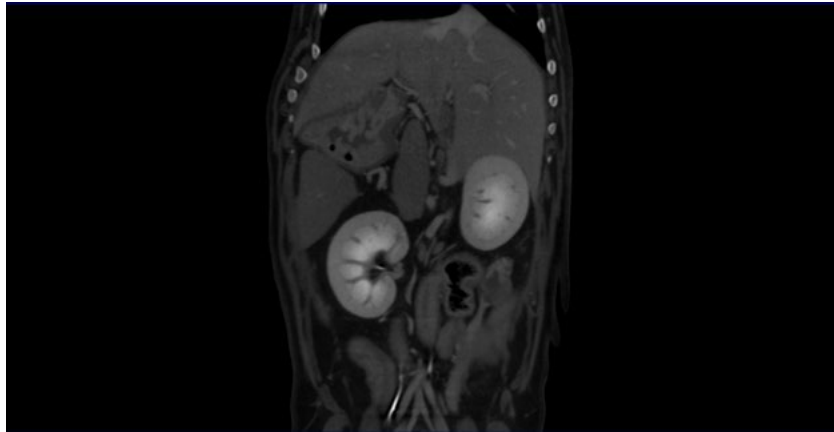


Height	180 cm
Length	81 cm
Gantry Diameter	152 cm
Weight	300 kg



Learn more
about
Vimago





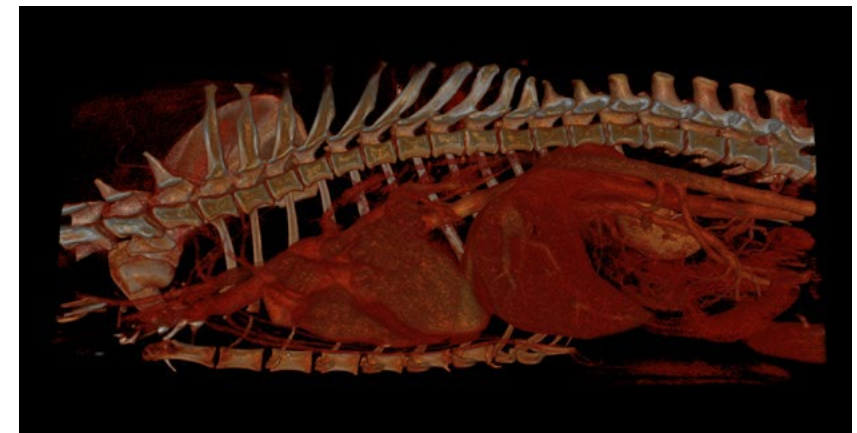
Scouting and Post Processing Systems

SCOUTING

It shows an exact preview of the areas to be scanned, identifying the areas of interest and speeding up the CT examination.

POST PROCESSING

It allows you to review and analyse the results of the examination in depth at a later time, after releasing the patient.





Technical Assistance and Customer Care

We ensure *directly* or through local providers, the *technical assistance* service, continuously monitoring the installed machines thanks to the remote connection of our technicians.

Reduced installation costs, *training* for the operators and *continuous assistance* until the acquisition of a good level of use of the machine these are our distinctive features.

Contacts

IMAGINALIS S.r.l
Via Morandi, 13-15
Sesto Fiorentino (FI) Italia

info@imaginalis.it
service@imaginalis.it
(+39) 055 0463727

🌐 [imaginalis.it](https://www.imaginalis.it)
📷 [@imaginalis_srl](https://www.instagram.com/imaginalis_srl)
f [/ImaginalisSrl](https://www.facebook.com/ImaginalisSrl)

Rev.02bis del 27/11/2022 Short Company Profile

